



Profile of the Transport Authority Amsterdam

Transport Authority Amsterdam joins municipalities while working for a region in which people can quickly and easily reach their destination. The municipalities of Aalsmeer, Amstelveen, Amsterdam, Beemster, Diemen, Edam-Volendam, Haarlemmermeer, Landsmeer, Oostzaan, Ouder-Amstel, Purmerend, Uithoorn, Waterland, Wormerland and Zaanstad together form the Transport Authority Amsterdam.

Public transport

The Transport Authority is commissioning authority for public transport by bus, tram and underground railway. To this end we grant concessions to transport companies and subsidies for the operation of public transport and invest in new trams and underground railways.

Infrastructure

The Transport Authority also finances improvements to the regional infrastructure for goods vehicle, car, bicycle and public transport, while implementing policy for the better exploitation and use of the roads network and the public transport and cycling networks.



The renewal and maintenance of railway infrastructure and the optimisation of safety are further points for attention. We play a leading or guiding role, and in our approach bring the interests of different parties together while ensuring connections with local and national networks.

Cycle use

The Transport Authority also stimulates cycle use. We work on a network of high quality, fast cycling routes in the Amsterdam region.

We play an active role in the construction of cycle parking facilities at stations to strengthen the combination of bicycle and public transport.

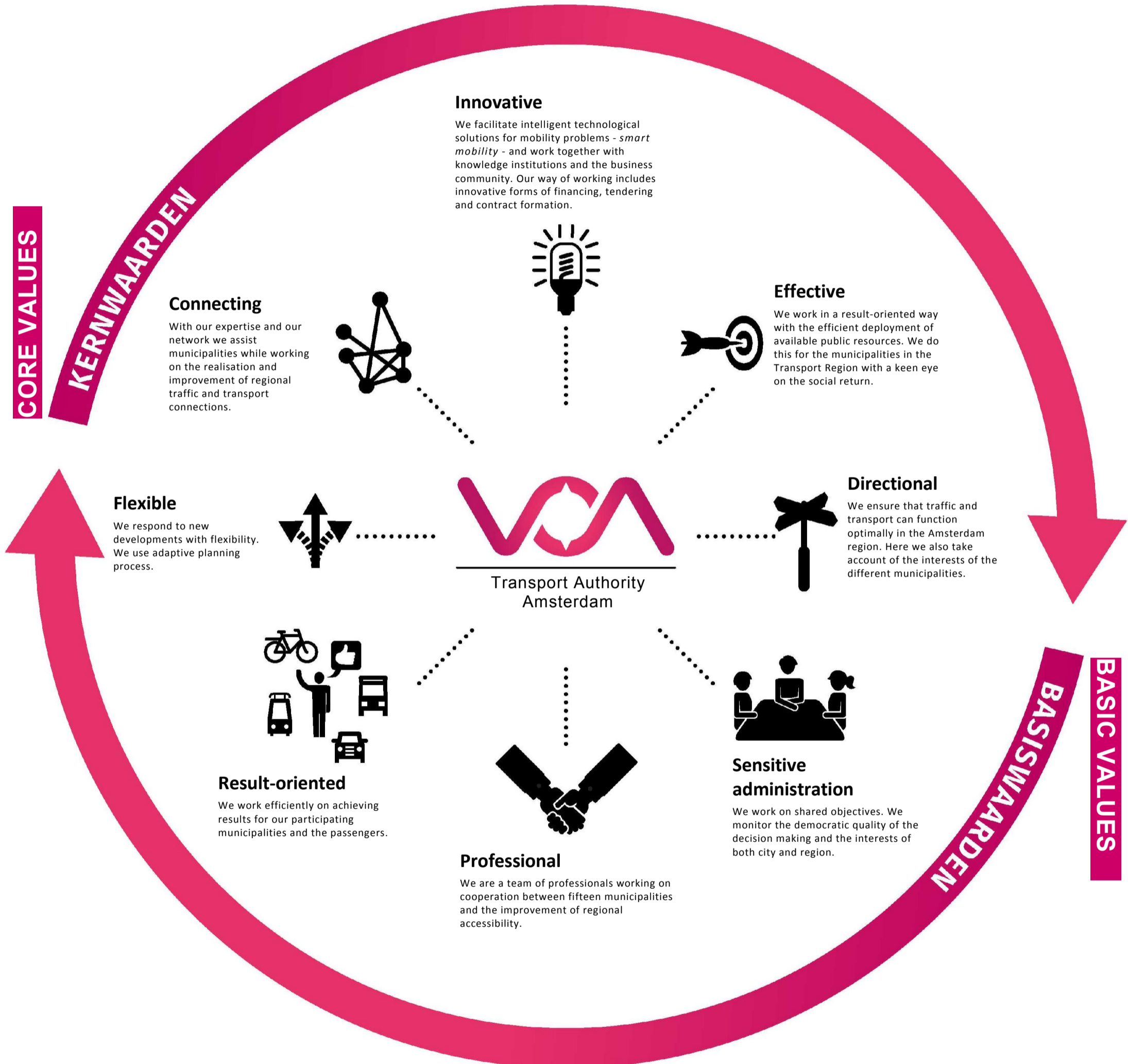
Traffic safety

We also put efforts into providing a safe traffic region with a reduction in the number of road traffic casualties. With our approach we aim at a safe infrastructure and safe traffic behaviour based on education, information and enforcement. The focus here is on the road user.

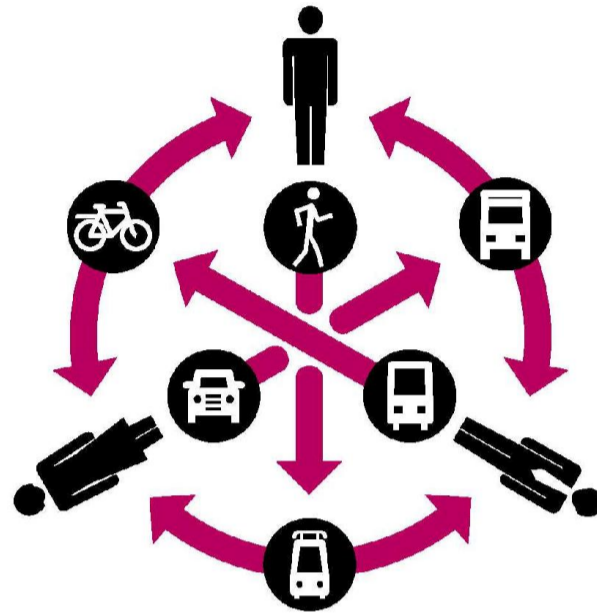
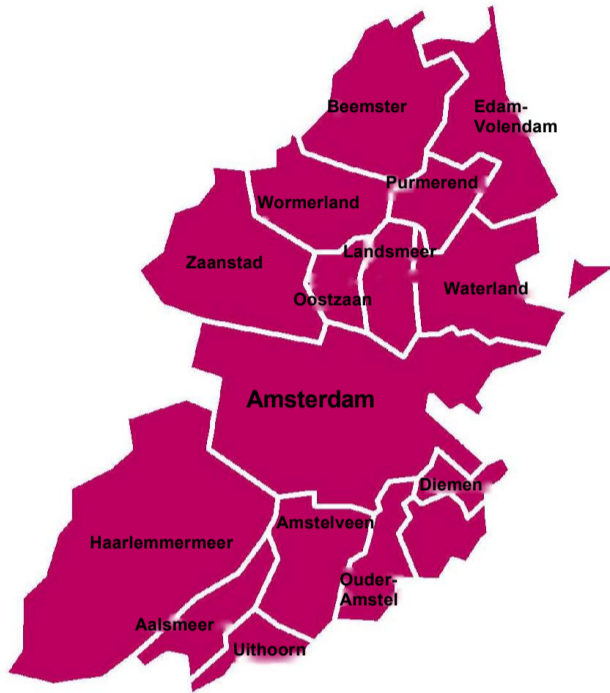
The organisation

The Transport Authority staff are motivated professionals who on behalf of the municipalities prepare decision making, draw up regional policy, initiate and carry projects *and* bring about cooperation between the various parties. Decision making and consultation take place in the regional council, along with consultation between the daily administration and portfolio holders. The burgomasters and aldermen of the fifteen municipalities are represented here.

Transport Authority Amsterdam has four core values and four basic values as its guide for the development of policy and the verification of measures



Transport Authority Amsterdam joins municipalities while working for a region in which people can quickly and easily reach their destination. The municipalities of Aalsmeer, Amstelveen, Amsterdam, Beemster, Diemen, Edam-Volendam, Haarlemmermeer, Landsmeer, Oostzaan, Ouder-Amstel, Purmerend, Uithoorn, Waterland, Wormerland and Zaanstad together form the Transport Authority Amsterdam.



Mission: to connect

Transport Region Amsterdam works on the optimum accessibility of the Amsterdam region. As the administrator of regional traffic and transport, we also help in ensuring good connections between destinations so people can travel by public transport, bicycle or car quickly, safely and in comfort. With fifteen municipalities we combine our knowledge and administrative capacity to achieve this aim.

We also look for symbioses with fellow authorities, educational and knowledge institutions, social organisations and the business community. Together we develop innovative solutions for the mobility challenges. We also strive for the sustainable use of energy and raw materials in the traffic and transport system. We then assist in obtaining an economically strong region, in which travelling and residing is a pleasure for everyone.



Transport Authority
Amsterdam



Vision: improvement and strengthening

Mobility in the Amsterdam region is changing. The numbers of residents, jobs and visitors are growing. This results in more cars, public transport, (e)bicycles, goods transport and air traffic. New locations must be made accessible. The complex regional traffic and transport system must align itself with the new developments and be further strengthened.

The Transport Authority wishes to provide effective solutions for the mobility challenges. In so doing we concentrate on more possibilities of bicycle and public transport use, the improvement of transport by road, smart mobility, and encouraging emission-free transport.



Ambition: optimal accessibility

To become the most easily accessible urban region in the Netherlands, that is Transport Authority Amsterdam's ambition. Here we work with the provinces of North Holland and Flevoland, the municipalities Almere and Lelystad, other parties in the Amsterdam Metropolis Region as well as the Government, transport companies, NS and ProRail among others.